

Edoardo Micheli

summer 2013/III, 125

slide whistle and string quartet



## SLIDE WHISTLE

## PRELIMINARY INSTRUCTIONS

The embouchure of the whistle between the teeth, without tightening.  
The whole slide pulled out, in order to play the lowest sound of the instrument.

Three fragments (A, B, C) to play in a freely chosen order, each of them twice in succession, without making breaks.

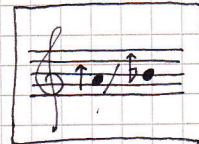
## PERFORMANCE

[A] (to play twice in succession)

1- Inhale in the whistle as long as possible (air noise)

2- Exhale in the whistle as long as possible

↳ with very few breath so TO OBTAIN A VERY SOFT, UNSTABLE, TREMBLING AND UNCERTAIN MEDIUM-LOW SOUND [SOUND 1].



[B] (to play twice in succession)

1- Inhale in the whistle as long as possible (air noise)

2- Exhale in the whistle as long as possible,

↳ begin with very few breath [SOUND 1] and gradually increase until you OBTAIN, TOGETHER WITH SOUND 1, A SECOND SOUND (HIGHER, PENETRATING, VERY UNSTABLE) [SOUND 2].

Sustain it until the end of the exhalation.



→



C (to play twice in succession)

1 - Inhale in the whistle as long as possible

2 - Exhale in the whistle as long as possible

↳ begin with very-few breath [SOUND 1] and gradually increase until you OBTAIN, passing through SOUND 2, A NEW SOUND [SOUND 3], LOWER THAN SOUND 2, MORE INTENSE, STABLE BUT RATHER INEXPRESSIVE.

Sustain it until the end of the exhalation.





# STRINGS

## GENERAL ADVICES

### Bow contact points

**POCO TASTO** : a little (1-2 cm) above the ordinary position

**ORD** : ordinary position

**PONT** : between ordinary position and bridge

**MP** : 1-0,5 cm above the bridge

### Bow speed

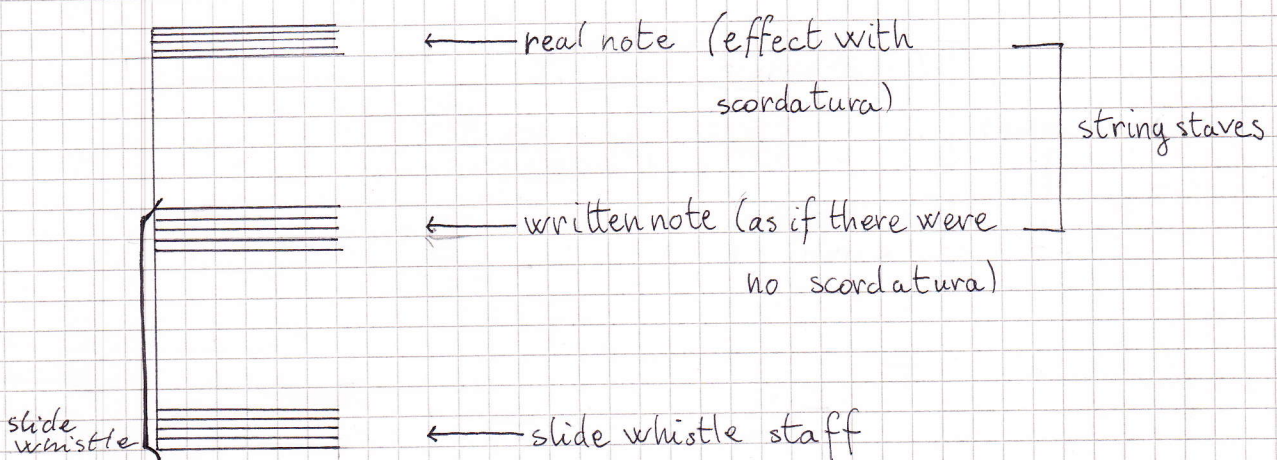
*arco lentissimo* : very slow bow (half bow in 35/40  $\downarrow$ ,  $\downarrow = 60$ )

*arco lento* : slow bow / see "harmonic 1"

*arco velocissimo* : very fast bow / see "harmonic 2"

When no indication is given, a quite ordinary bow speed is required

### Staves



### Typologies of sound

★ Harmonic ① [5th harmonic on open string (without fingering!)]

5<sup>th</sup> arm  
#  $\downarrow$  - 14 c.

arco lento: bow slow enough in order to produce the 5th harmonic (rather slow but not extreme slow)

mp arco lento

Together with the harmonic sound there's always a little amount of the fundamental sound

pp

a light bow pressure is required, or rather the lightest pressure possible in producing the 5th harmonic as described.



### ★ Harmonic ② [10th harmonic on open string (without fingering!)]

10° arm.  
-14 c.

Poco TASTO  
arco velocissimo

IV  
L.v.

p

[arco velocissimo: very fast bow in order to produce the 10th harmonic (something like a flautato but with more pressure)]

[together with the harmonic sound a small amount of the fundamental sound is audible]

[little more pressure than a flautato]

### ★ Harmonic ③ ["standard" natural harmonic]

Natural harmonics (touching point always written) from 3th to 15th to bow in ordinary position.

In case of a natural harmonic PIZZICATO, the touching finger has to leave the string very soon after the right hand PIZZICATO.

### ★ Fundamental sounds

To be played "col legno tratto" and very slow bow (*arco lentissimo*).

N.B.: the variation in cents of the effect note is the variation from the tempered scale, caused by scordatura, or because the sound is an harmonic, or because of both. There could be slightly variations from instrument to instrument (also from cello to cello or from violin to violin etc...), even in the harmonic tuning. The amount of cents is just an indication.



# VIOLIN I

## PRELIMINARY INSTRUCTIONS

The slide whistle plays three fragments (A, B, C) in a freely chosen order, each of them twice in succession, without interruptions (see page 2). Each fragment consists of a long inhalation in the whistle (soft air noise) followed by a long exhalation that produces different sounds in each fragment, according to the amount of air used (see pages 2 and 3).

The strings play only during the repetition of each fragment, and only during the exhalation, choosing from some different possibilities.

### Scordatura

Musical notation for Scordatura: A single staff with four notes. Above each note is a '-50' marking. Below the staff, the fingerings are indicated as IV, III, II, and I from left to right.

### PERFORMANCE

Fragment **A** (choose one of the following possibilities)

Musical score for Fragment A, Option I. It consists of two systems. The first system has three staves: Violin I (vln I), Whistle, and another Violin I (vln I). The top staff (vln I) has a note with '-50c.' above it and a box labeled 'ORD'. Below it, the instruction 'col legno tratto arco lentissimo' is written. A bracket labeled 'MP' spans the top two staves. The bottom staff (vln I) has a note with 'ppp' below it. The whistle staff has a note with 'pppp' below it. The second system has two staves: Violin I (vln I) and Whistle. The violin I staff has a note with 'ppp' below it. The whistle staff has a note with 'pppp' below it.

Musical score for Fragment A, Option II. It consists of two systems. The first system has three staves: Violin I (vln I), Whistle, and another Violin I (vln I). The top staff (vln I) has a note with '2° arm. -50c.' above it and a box labeled 'ORD'. Below it, the instruction 'as far as possible' is written. The bottom staff (vln I) has a note with 'ppp' below it. The whistle staff has a note with 'pppp' below it. The second system has two staves: Violin I (vln I) and Whistle. The violin I staff has a note with 'ppp' below it. The whistle staff has a note with 'pppp' below it.



Fragment B (choose one of the following possibilities)

5° arm.  
-64 c.

MP  
arco lento

vln I

whistle

pppp

III

vln I

whistle

pppp

10° arm.  
-64 c.

POLO TASTO  
arco velocissimus

vln I

whistle

pppp

L.V.

Fragment C (choose one of the following possibilities)

6° arm.  
-48 c.

ORD  
IV

vln. I

whistle

pppp

as pds possible

vln I

whistle

pppp



## VIOLIN II

## PRELIMINARY INSTRUCTIONS

The slide whistle plays three fragments (A, B, C) in a freely chosen order, each of them twice in succession, without interruptions (see page 2). Each fragment consists of a long inhalation in the whistle (soft air noise) followed by a long exhalation that produces different sounds in each fragment, according to the amount of air used (see pages 2 and 3).

The strings play only during the repetition of each fragment, and only during the exhalation, choosing from some different possibilities.

Scordatura

## PERFORMANCE

Fragment A (choose one of the following possibilities)



Fragment B (choose one of the following possibilities)

I

col legno tratto  
arco lentissimo

ORD

MP

vln II

pppp

whistle

pppp

II

vln II

pppp

whistle

pppp

III

5° arm.  
-14 c.

MP  
arco lento

vln II

pppp

whistle

pppp

Fragment C (choose one of the following possibilities)

I

6° arm.  
+2c.

ORD  
IV

as p as possible

vln II

pppp

whistle

pppp

II

4° arm.

ORD  
III

as p as possible

vln II

pppp

whistle

pppp



III

vlh II

whistle

*pppp* <<

The image shows a handwritten musical score on grid paper. It consists of two staves. The top staff is labeled 'vlh II' and has a treble clef. Above the staff is the Roman numeral 'III'. The staff contains a whole rest. The bottom staff is labeled 'whistle' and has a treble clef. It contains a melodic line starting with a quarter note, followed by a diamond-shaped ornament, and then a half note. There are two flats (b) above the staff, one above the first note and one above the second note. Below the staff, there is a dynamic marking '*pppp*' with two arrows pointing left.



# VIOLA

## PRELIMINARY INSTRUCTIONS

The slide whistle plays three fragments (A, B, C) in a freely chosen order, each of them twice in succession, without interruptions (see page 2). Each fragment consists of a long inhalation in the whistle (soft air noise) followed by a long exhalation that produces different sounds in each fragment, according to the amount of air used (see pages 2 and 3).

The strings play only during the repetition of each fragment, and only during the exhalation, choosing from some different possibilities.

### Scordatura

Diagram showing scordatura for viola. The staff is in C major with a key signature of one flat (Bb). The notes are: Bb (IV), B (III), Bb (II), B (I). Above the staff, the fingerings are indicated as -50c. and -33c. Below the staff, the fingerings are indicated as IV, III, II, I.

## PERFORMANCE

Fragment **A** (choose one of the following possibilities)

Performance notation for Fragment A, showing two possibilities (I and II) for the strings and the whistle part.

**Option I:**

- Violin I (4<sup>th</sup> arm): -50c.
- Violin II: PIZZ. (Pizzicato), ORD (Ordinary), IV.
- Viola (vla): L.V. (Larghetto), ppp (pianissimo).
- Whistle: Long inhalation/exhalation.

**Option II:**

- Violin I: col legno tratto (col legno tratto), arco lentissimo (arco lentissimo), ORD (Ordinary), I.
- Violin II: ORD (Ordinary), V.
- Viola (vla): ppp (pianissimo), MPI (Molto Piano).
- Whistle: Long inhalation/exhalation.



Fragment B (choose one of the following possibilities)

I 5° arm. #2-14c.

MP arco lento

vla

whistle

pppp

II 10° arm. # -47c.

POCO TASTO arco velocissimo

vla

whistle

pppp

vla

whistle

pppp

Fragment C (choose one of the following possibilities)

I -50c.

col legno tratto arco lentissimo

ORD MP

vla

whistle

pppp

II 11° arm.

PONT IV V

as pds possible

vla

whistle

pppp

vla

whistle

pppp



# CELLO

## PRELIMINARY INSTRUCTIONS

The slide whistle plays three fragments (A, B, C) in a freely chosen order; each of them twice in succession, without interruptions (see pag. 2). Each fragment consists of a long inhalation in the whistle (soft air noise) followed by a long exhalation that produces different sounds in each fragment, according to the amount of air used (see pages 2 and 3).

The strings play only during the repetition of each fragment, and only during the exhalation, choosing from some different possibilities.

### Scordatura

A diagram showing the scordatura for the cello. It consists of a single bass clef staff with four notes: a flat on the fourth line (G2), a flat on the second line (B1), a flat on the first line (A1), and a flat on the first space (B1). Above the staff, the notes are labeled with fingerings: -50c. above the G2 note, -33c. above the B1 note, and a flat symbol above the A1 note. Below the staff, the fingerings are labeled: IV under the G2 note, III under the B1 note, II under the A1 note, and I under the B1 note.

## PERFORMANCE

Fragment **A** (choose one of the following possibilities)

Performance notation for Fragment A, Option I. It features three staves: Violin (vln.), Viola (vcl.), and Whistle. The Violin staff has a treble clef and a note on the first line (F4) with a fingering of 7° arm. and -31c. above it. The Viola staff has a bass clef and a note on the first space (F3) with a fingering of IV above it. The Whistle staff has a treble clef and a note on the first line (F4) with a fingering of V above it. A box labeled 'PONT' is placed above the Viola staff. A vertical dashed line connects the PONT box to the Whistle staff. The text 'as p as possible' is written below the Whistle staff. The word 'popp' is written below the Whistle staff.

Performance notation for Fragment A, Option II. It features three staves: Violin (vln.), Viola (vcl.), and Whistle. The Violin staff has a treble clef and a note on the first line (F4) with a fingering of 5° arm. and -64c. above it. The Viola staff has a bass clef and a note on the first space (F3) with a fingering of III above it. The Whistle staff has a treble clef and a note on the first line (F4) with a fingering of V above it. A box labeled 'MP' is placed above the Viola staff. The text 'arco lento' is written below the MP box. The word 'popp' is written below the Whistle staff.



III -33c.

col legno tratto  
arco *lurissimis*

vlc. *pppp*

whistle *pppp*

MP

IV 3° arm.

PIZZ  
ORD  
II

vlc. *pppp*

whistle *pppp*

L.v.

vlc.

whistle *pppp*

Fragment B (choose one of the following possibilities)

I 10° arm.  
-47c.

POCO TASTO  
arco *velocissimis*

vlc. *pppp*

whistle *pppp*

L.v.

II 15° arm.  
-12c.

PONT  
II  
OP  
II

vlc. *pppp*

whistle *pppp*

as far as possible

vlc.

whistle *pppp*



Fragment C (choose one of the following possibilities)

**System I:** 13° arm. -9c.  
v.c. III  
whistle  
as p as possible  
pppp <<

**System III:** 9° arm. +6c.  
v.c. II  
whistle  
as p as possible  
pppp <<

**System II:** 15° arm. -62c.  
v.c. III (on #)  
whistle  
as p as possible  
pppp <<

**System IV:**  
v.c.  
whistle  
pppp <<